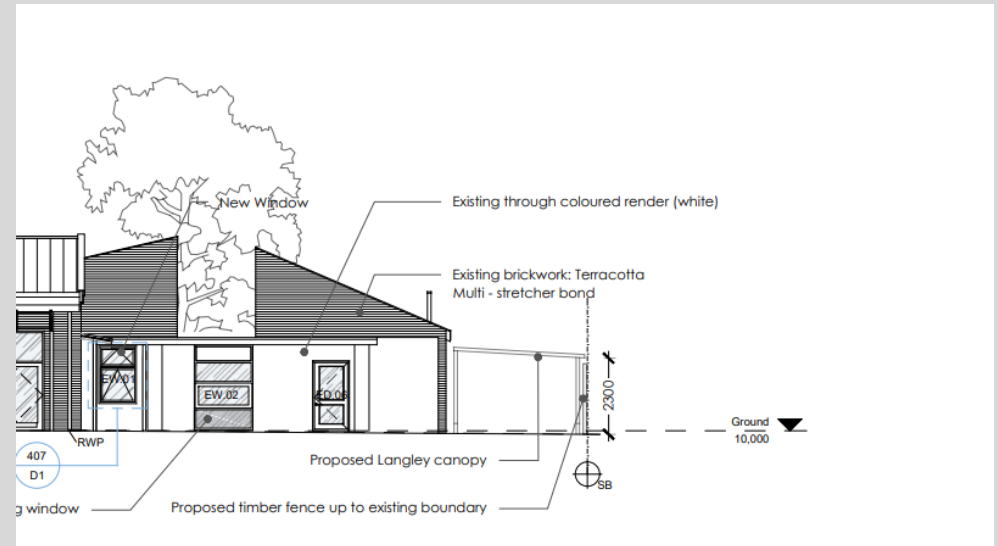
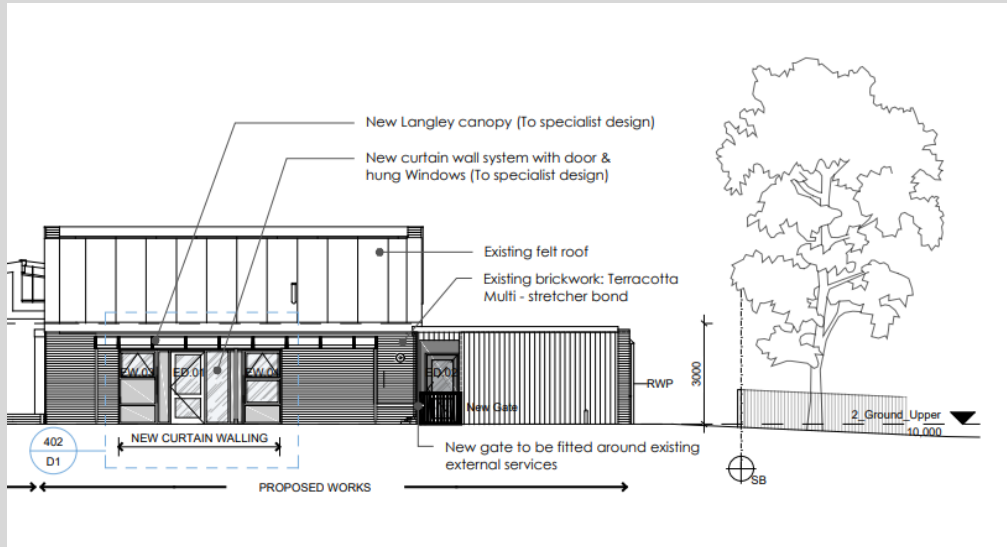


Est 1946



PENROSE NURSERY

Refurbishment – Education – Specialist Facilities

Est 1946

Description of works:

Penrose School in Bridgewater is a school for pupils with profound and multiple learning difficulties aged 3-19, serving the communities of Sedgemoor and surrounding districts.

Works comprised the internal reconfiguration of an existing educational facility to create a children’s nursery and associated external landscaping works.

The works included the following:

- Forming demountable partitions to create new rooms
- Insertion of new external doors and windows
- Replacement of existing external doors
- Installation of new plumbing and associated sanitaryware
- Installation of new exterior canopy
- External hard landscaping works



Client:	Somerset County Council
Architect:	Wotton Donaghue Architects
Contract Administrator:	Futures for Somerset
Form of Contract:	JCT Minor Works 2016 with Contractors Design
Value:	Undisclosed